

FS-C5030N

A4 COLOUR PRINTER

► print ► copy ► scan ► fax

HIGH-SPEED COLOUR PRINTING WITH ADDED PAYBACK.

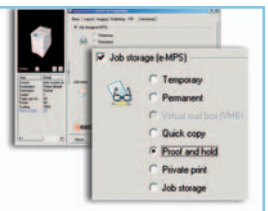
The FS-C5030N is a professional work-group colour printer that pays you back in more ways than one. With very fast document output, it excels at high volume printing, all the while minimising cost per page figures. Built with proven Kyocera long-life components, this is a printer that adds to the possibilities of what your business can achieve.

- 24 pages per minute in A4 colour and b/w
- Time to first page: 12 seconds
- 600 sheets input capacity as standard, upgradeable to 2,100 sheets
- PowerPC 750FX/600 MHz, 128 MB RAM
- PCL6, PostScript 3 and PDF direct printing
- USB 2.0 (Hi-Speed) and network connectivity as standard
- Compact design and small footprint
- Long-life components

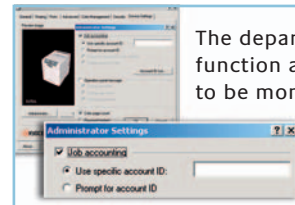
Product depicted includes optional extras



The proof and hold function lets you print a first runout and check it before releasing the whole job.



The departmental code function allows print costs to be monitored – and controlled.



Ecosys

 **KYOCERA**

FS-C5030N

A4 COLOUR PRINTER



ECOSYS devices are designed to minimise both direct costs and indirect costs, such as maintenance, administration and consumables. The cartridge-free system requires only the toner to be replaced. The modular design concept allows you to add workflow-enhancing functions and a wide variety of paper handling capabilities as required. Integrated system software provides long-term cross-network compatibility. Kyocera's long-life components cost you and the environment less.

System platform:

The FS-C5030N offers USB, parallel and network connectivity as standard and delivers problem-free system administration. Kyocera's single platform technology means that the same driver can be used for every Kyocera PCL/PostScript print device on the network; from single-user desktop printers to high-end multifunctional systems. Only Kyocera offers this effortless combination of IT sophistication and high-performance paper handling expertise.

PRESCRIBE IIc:

With the Kyocera page design and control language PRESCRIBE IIc, even complex graphics, logos and forms (even multipart forms) can be created independently of the system and saved and updated in the printer. Consequently, integration into print files no longer applies. They are only accessed as required and therefore relieve the load on the network.

KM-NET for Client/KM-NET Viewer:

The settings of all printers on the network can be checked visually and amended from any Windows® PC. KM-NET for Client enables easy setup and monitoring of the printer status via parallel, USB or network connection. KM-NET Viewer is an advanced printer management software tool using the standardized protocol SNMP.

GENERAL

Technology: Kyocera Colour ECOSYS
Engine speed: Max. 24 pages per minute b/w and full colour
Up to 24 images per minute in duplex mode (optional)
Resolution: 600 x 600 dpi
Multi-Bit Technology for optimum colour output
Time to first page: 12 seconds or less
Warm-up time: 80 seconds or less from power on
Duty cycle: Max. 85,000 pages per month (A4), max. average 15,000 per month
Power source: AC 220 ~ 240 V, 50/60 Hz
Power consumption: Printing: 551 W, Stand-by: 180 W, Power-Saving (ECOpower): 21 W
Noise (ISO 7779): Printing: 55 dB(A), Stand-by: 36 dB(A), Power-Saving (ECOpower): Immeasurably Low
Dimensions (W x D x H): 345 x 470 x 385 mm
Weight: Approx. 23 kg
Certification: TÜV/GS, CE
This product is manufactured according to ISO 9001 quality standard and ISO 14001 environmental standard.

PAPER HANDLING

All paper capacities quoted are based on a paper thickness of max. 0.11 mm. Please use paper recommended by Kyocera under normal environmental conditions.

Input capacity: 500-sheet universal cassette, 60-105 g/m², A4, B5, A5, Letter, Custom (148 x 210 - 216 x 356 mm), 100-sheet multi-purpose tray, 60-200 g/m², A4, B5, A5, Letter, Legal, Custom (70 x 148 - 216 x 297 mm), max. 2,100 sheets
Output capacity: 250-sheet face-down with paper full sensor, face-up output with optional PT-301

CONTROLLER

Processor: PowerPC 750FX / 600 MHz
Memory: 128 MB RAM + ECOMemory, max. 1,024 MB in 2 DIMM slots
Emulations: PCL 6 (PCL 5c/PCL-XL), KPDL 3 (PostScript 3 compatible) with automatic emulation sensing (AES), PDF direct print
Controller language: PRESCRIBE IIc
Fonts: 80 outline fonts (PCL 6: PCL 5c/PCL-XL), 136 outline fonts (KPDL 3); 1 bitmap font; 45 types of one-dimensional barcodes, plus 1 type of two-dimensional barcode (PDF-417).
Downloadable fonts: Kyocera, PCL + TrueType format, Type 1 + 3 font format
Print features: eMPS - for quick copy, proof and hold, private print, job storage and job management functionality with hard disk

INTERFACE

Standard interface: High speed bi-directional parallel (IEEE 1284), USB 2.0 (Hi-Speed), Fast Ethernet 10/100Base-TX, KUIO-LV option interface slot
Multiple interface connection (MIC): Allows simultaneous data transfer via up to four interfaces, with each interface having its own virtual printer.

CONSUMABLES

Toner-kit TK-510K: Microfine toner black for 8,000 pages with 5% A4 coverage (ISO 10561B).
Toner-kit TK-510C: Microfine toner cyan for 8,000 pages with 5% A4 coverage (ISO 10561B).
Toner-kit TK-510M: Microfine toner magenta for 8,000 pages with 5% A4 coverage (ISO 10561B).
Toner-kit TK-510Y: Microfine toner yellow for 8,000 pages with 5% A4 coverage (ISO 10561B).
Capacity of starter toner is 4,000 pages with 5% coverage (ISO 10561B).

OPTIONS

Paper handling
PF-60 Paper feeder: 500-sheet, 60-105 g/m², A4, B5, A5, Letter, Legal, Custom (148 x 210 - 216 x 356 mm) max. 3 PF-60
EF-60 Envelope feeder: 70 standard envelopes / 100 air mail envelopes, A6-C5
DU-301 Duplex unit: Double-sided printing, 60-105 g/m², A4, B5, A5, Letter, Legal, Custom (148 x 210 mm - 216 x 356 mm)
PT-301 Paper tray: Face-up paper output tray

Memory

Printer memory: 2 slots (64, 128, 256, 512 MB DIMM)
CompactFlash® card: 1 slot (16, 32, 64 MB) for printing forms, fonts, logos, macro storage.
Hard disk HD-4/HD-5: 20/40 GB HDD for easy document management
OCR-2: Font ROM with OCR-A and OCR-B font types

Optional interface

IB-23 Network card: 10Base-T/100Base-TX
SB-70 Network card: Wireless LAN - IEEE 802.11b
SB-110FX Network card: 10Base-T/100Base-TX/100Base-FX, FibreOptic
IB-11 Serial interface: RS-232C Serial Interface (up to 115.2kbps)

WARRANTY

2-year warranty as standard. Kyocera guarantees the drums and developers for 3-year or 200,000 pages (whichever occurs sooner), provided each printer is used and cleaned in accordance with the service instructions.

KYO LIFE The up to 5-year on-site warranty extension for printer and options.



Select your options to suit your needs:

Envelope feeder (EF-310)

Duplex unit (DU-301)

Paper feeder (up to 3 x PF-60)

Cabinet (CB-60)



Product depicted includes optional extras

Your Kyocera Business Partner:

Kyocera Mita Europe B.V., Hoeksteen 40, 2132 MS Hoofddorp, The Netherlands, Tel +31 (0) 20 65 40 000, Fax +31 (0) 20 65 31 256, www.kyoceramita-europe.com, info@kyoceramita-europe.com
Kyocera Mita Corporation, 2-28, 1-Chome, Tamatsukuri, Chuo-Ku, Osaka 540-8585, Japan, www.kyoceramita.com

Kyocera does not warrant that any specifications mentioned will be error-free. Specifications are subject to change without notice. Information is correct at time of going to press. All other brand and product names may be registered trademarks or trademarks of their respective holders and are hereby acknowledged.

